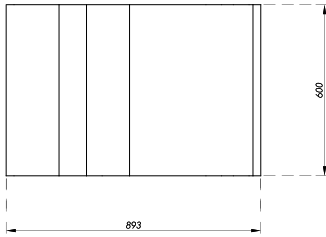
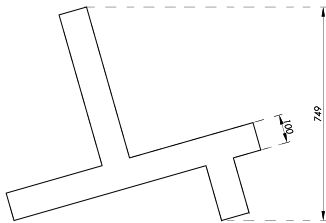


## BENCH AERA



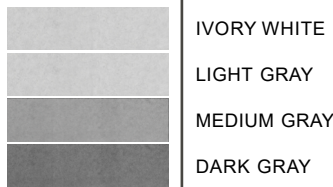
TOP VIEW



FRONT VIEW

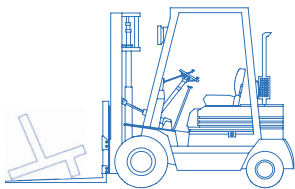
**DIMENSIONS:** 35.43"x23.62"x23.62"  
**APPROXIMATE WEIGHT:** 240KG

### COLORS

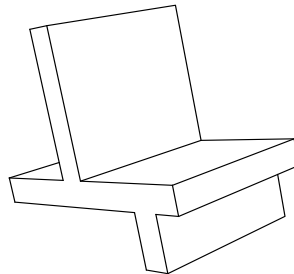


The available colors are exclusive, with a visible finish.

### INSTALLATION



The use of forklifts is recommended for the proper installation of the Aera bench.



### PRODUCT INFORMATION

The Aera benches are prefabricated elements made of architectural concrete by Opticretos with dimensions L: 35.43", W: 23.62", H: 23.62", and a weight of 240kg. Designed for outdoor use, they are resistant to vandalism and heavy-duty use. Benches are a good option for various public and private spaces such as schools, universities, parks, corporate areas, residential spaces, industrial plants, hospitals, etc.

### MANUFACTURING

Our benches are manufactured using special molds. The concrete is processed following quality standards under controlled conditions, ensuring the maximum durability of our materials.

### COMPONENTS

We use materials such as cementitious marble chips, anti-fungal additives, alkali-resistant polypropylene fibers, integral waterproofing additives, and hydrophobic sealant.

### ADVANTAGES

- Stain-resistant
  - Easy installation
  - Durability
  - Environmentally sustainable
- Its maintenance is minimal, and the color does not change or degrade over time since natural materials are used.

### CODES AND REGULATIONS

All our concrete products comply with current regulations. Some of these codes include: ACI 318, PCI (Precast Concrete Institute), IMCYC (Mexican Institute of Cement and Concrete), and the Building Regulations of the Federal District.



### FOLLOW US ON SOCIAL MEDIA



INSTAGRAM



FACEBOOK



WWW.